



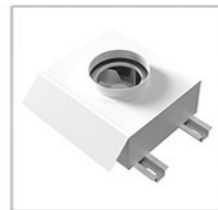
## Walk-in Fume Hood



E-mail: [export@biobase.com](mailto:export@biobase.com)  
[www.biobase.cc](http://www.biobase.cc) / [www.biobase.com](http://www.biobase.com)



Water Sink



Exhaust Fan



Water & Gas Remote Control Valve



Water & Gas Tap

## ADVANTAGE

1. With memory function in case of power-failure.
2. Operators are available to walk into the fume hood to operate if need.
3. Large room exhaust system, suitable for large laboratory instruments and equipment.

## TECHNICAL PARAMETERS

| Model                  | FH1200(W)  | FH1500(W)  | FH1800(W)             |                  |
|------------------------|--|--|-----------------------|------------------|
| External Size (W*D*H)  | 1200*800*2250mm  | 1500*800*2250mm  | 1800*800*2250mm       |                  |
| Internal Size (W*D*H)  | 980*550*1670mm   | 1280*550*1670mm  | 1580*550*1670mm       |                  |
| Max Opening            | 1300mm   |  |                       |                  |
| Exhaust Airflow Volume | 1150m <sup>3</sup> /h  | 1500m <sup>3</sup> /h  | 1850m <sup>3</sup> /h |                  |
| Inflow Air Velocity    | 0.3~0.8m/s   |  |                       |                  |
| Noise                  | ≤ 62dB   |  |                       |                  |
| Vibration              | Amplitude ≤5μm   |  |                       |                  |
| Illumination           | ≥800Lux  |  |                       |                  |
| LED Lamp               | 12W*2  | 16W*2  | 16W*2                 |                  |
| Power Supply           | AC220V±10%, 50/60Hz; 110V±10%, 60Hz  |  |                       |                  |
| Consumption            | 400W   | 500W   | 800W                  |                  |
| Front Window           | Manual, 5mm toughened glass,height adjustable  |  |                       |                  |
| Material               | Exterior   | 1.0mm cold-rolled steel with bacteria powder coating.                |                       |                  |
|                        | Interior   | Compact laminate board with good acid and alkali resistance function |                       |                  |
| Standard Accessory     | External blower, LED lamp, Water tap, Gas tap, PP cup sink, Remote control water valve, Remote control gas valve, Waterproof sockets*4, 5 meters Φ300mm PVC exhaust duct |  |                       |                  |
| Sockets                | Total load of 4 waterproof sockets: ≤500W  |  |                       |                  |
| Package Size (W*D*H)   | Main Body  | 1400*1050*2450mm   | 1710*1050*2450mm      | 2010*1050*2450mm |
|                        | Exhaust Blower   | 970*810*720mm  | 1040*890*710mm        | 1040*890*710mm   |
| Gross Wight            | 300KG  | 340KG  | 390KG                 |                  |